

Frank Lloyd Wright

A WORLD OF INFLUENCE

America's most celebrated architect has shaped generations of designers, transforming how we live and build. His visionary, seven-decade-long career spanned America's Prairie School, the birth of modernism, and the sculptural flights of fancy that dominate today's cityscapes.

The Modernist Masters

Europe's emerging modernist giants were heavily influenced by the 1910 German release of the Wasmuth Portfolio, a seminal collection of Wright's early work.

The Japanese Disciples

A passionate fan of Japanese art, Wright first visited Japan in 1905. He returned in 1917 to oversee work on Tokyo's Imperial Hotel.

The American Acolytes

In 1932 Wright established the Taliesin Fellowship, an architecture school and apprenticeship program that splits its time between the architect's homes in Wisconsin and Arizona.

A celebrity in his own time, Wright and his design principles have had enduring resonance with the 21st century's starchitects.

LOUIS KAHN
1901 - 1974

I.M. PEI
1917 -

MICHAEL GRAVES
1934 - 2015

ZAHA HADID
1950 - 2016

NORMAN FOSTER
1935 -

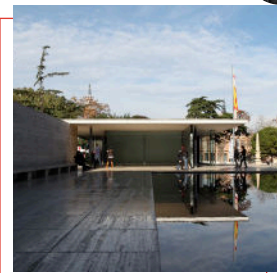
NOTRE DAME DU HAUT



LE CORBUSIER
1887 - 1965

A stylistic nemesis, Le Corbusier evoked Wright's use of large bands of windows and shifts of scale in his minimalist interior spaces.

LUDWIG MIES VAN DER ROHE
1886 - 1969



The highly influential open floorplans of Wright's Prairie School homes made an impression on Bauhaus greats Ludwig Mies van der Rohe and Walter Gropius.

WALTER GROPIUS
1883 - 1969



GROPIUS HOUSE

J.F.K. LIBRARY

Hadid said Wright's use of light and perspective in the Solomon R. Guggenheim Museum had an "incredible influence" on her.

HEYDAR ALIYEV CULTURAL CENTER

KEY

- INFLUENCED BY THE WASMUTH PORTFOLIO IN 1910
- STUDIED AT TALIESIN

IMPERIAL HOTEL APPRENTICES



IMPERIAL HOTEL

RUDOLPH SCHINDLER
1887 - 1953

The Austrian-born friends Schindler and Neutra immigrated to the U.S. to train with Wright at Taliesin before establishing their reputations in Southern California.

ARATA ENDO
1889 - 1951

Wright hired Endo to assist him on the Imperial Hotel, as well as several other Japanese projects.

KAMEKI TSUCHIURA
1897 - 1996

YOSHIYA TANOUÉ
1899 - 1991

RAKU ENDO
SECOND GENERATION
1927 - 2003

KUNIO MAEKAWA
SECOND GENERATION
1905 - 1986

JUNZO YOSHIMURA
SECOND GENERATION
1908 - 1997

RICHARD NEUTRA
1892 - 1970



CHUEY HOUSE

ANTONIN RAYMOND
1888 - 1976

Raymond accompanied Wright to Tokyo, where the Czech emigré established himself as a preeminent figure in Japanese modern architecture.

LLOYD WRIGHT
(FRANK LLOYD WRIGHT JR.)
1890 - 1978



WAYFARERS CHAPEL

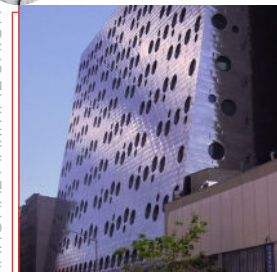
Wright's oldest son, who also studied landscape architecture with the Olmsted Brothers, shared his father's love of geometric forms and textile blocks.

MARTY LEONARD COMMUNITY CHAPEL

ERIC LLOYD WRIGHT
1929 -

Lloyd's son dedicated much of his career to preserving his father's and grandfather's work.

ALBERT LEDNER
1924 -



NATIONAL MARITIME UNION

The Taliesin apprentice earned praise for his bold (sometimes whimsical) modernist work, such as the National Maritime Union building.

DANIEL LIEBERMANN
1930 - 2015

BLAINE DRAKE
1911 - 1993

HENRY KLUMB
1905 - 1984

E. FAY JONES
1921 - 2004

An AIA Gold Medal winner, Jones pushed Wright's organic architecture principles to modernist heights.

JOHN LAUTNER
1911 - 1994

DESERT MODERNISTS

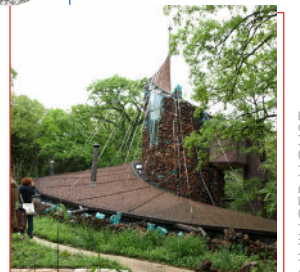
PAOLO SOLERI
1919 - 2013

The Italian-born apprentice shared Wright's love of the Arizona desert, developing a style that fused architecture and ecology.

JOHN RATTENBURY
1929 -

VERNON D. SWABACK
1940 -

BRUCE GOFF
1904 - 1982



BAVINGER HOUSE

Known for an eclectic, exuberant style, the Oklahoma architect and professor corresponded with Wright for years.

BART PRINCE
1947 -

JOSEPH EICHLER
1900 - 1974

CREATED BY CASUAL ASTRONAUT FOR

